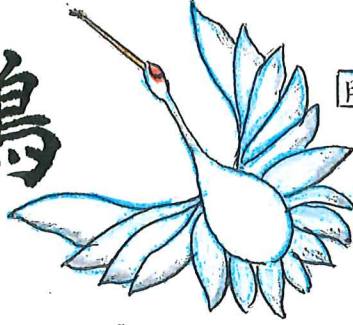


祝い鶴



用紙

大 = 楮(こぎ)もみ金雲赤裏金 ② 52x52cm
 中 = メタルカラー折り紙 ③ 12x12cm
 小 = メタルカラー折り紙 ④ 6x6cm

アドバイス

折り目は ひと折り
 ごとにしっかりと
 折り上げて下さい。

1. Start with a square sheet of paper, showing fold lines for the body and tail.

2. Fold the top corners towards the center line.

3. Fold the top corners towards the center line again, creating a pointed top. Arrows ① and ② indicate the direction of the folds.

4. Fold the top corners towards the center line, creating a pointed top. Arrows ③ and ④ indicate the direction of the folds.

5. Fold the top corners towards the center line, creating a pointed top. Arrows ⑤ and ⑥ indicate the direction of the folds.

6. Fold the top corners towards the center line, creating a pointed top. Arrows ⑦ and ⑧ indicate the direction of the folds.

7. Fold the top corners towards the center line, creating a pointed top. Arrows ⑨ and ⑩ indicate the direction of the folds.

8. Fold the top corners towards the center line, creating a pointed top. Arrows ⑪ and ⑫ indicate the direction of the folds.

9. Fold the top corners towards the center line, creating a pointed top. Arrows ⑬ and ⑭ indicate the direction of the folds.

10. Fold the top corners towards the center line, creating a pointed top. Arrows ⑮ and ⑯ indicate the direction of the folds.

11. Fold the top corners towards the center line, creating a pointed top. Arrows ⑰ and ⑱ indicate the direction of the folds.

12. Fold the top corners towards the center line, creating a pointed top. Arrows ⑲ and ⑳ indicate the direction of the folds.

13. Fold the top corners towards the center line, creating a pointed top. Arrows ㉑ and ㉒ indicate the direction of the folds.

14. Fold the top corners towards the center line, creating a pointed top. Arrows ㉓ and ㉔ indicate the direction of the folds.

15. Fold the top corners towards the center line, creating a pointed top. Arrows ㉕ and ㉖ indicate the direction of the folds.

16. Fold the top corners towards the center line, creating a pointed top. Arrows ㉗ and ㉘ indicate the direction of the folds.

17. Fold the top corners towards the center line, creating a pointed top. Arrows ㉙ and ㉚ indicate the direction of the folds.

18. Fold the top corners towards the center line, creating a pointed top. Arrows ㉛ and ㉜ indicate the direction of the folds. Label: かわせ折り

19. Fold the top corners towards the center line, creating a pointed top. Arrows ㉝ and ㉞ indicate the direction of the folds. Label: 中割り折り

20. Fold the top corners towards the center line, creating a pointed top. Arrows ㉟ and ㊱ indicate the direction of the folds.

21. Fold the top corners towards the center line, creating a pointed top. Arrows ㊲ and ㊳ indicate the direction of the folds.

22. The final completed crane. Dimensions are given: 大 34cm, 中 7cm, 小 3.5cm. The base width is given as 大 54cm, 中 12cm, 小 6cm.